



AIR FREIGHT CONTAINER SPECIFICATIONS

The following guide to airfreight containers, also called Unit Load Devices (ULD), has been developed from materials supplied by IATA (International Air Transport Association) and the ATA (Air Transport Association of America). This guide lists and illustrates the average external dimensions and weight limitations of the primary containers in use today. Exact dimensions and weight limitations will vary by manufacturer and availability will vary by air carrier and tradelane.

LD-1

IATA ULD Code: AKC Contoured Container
Also known as: AVC, AVD, AVK, AVJ
Forkable: AVY
Classification: LD-1
Rate Class: Type 8
Suitable for: B747, B767, B777, MD-11
Internal volume: 4.8 cu. m (169.5 cu. ft)
Maximum gross weight: 1588 kg (3501 lb)



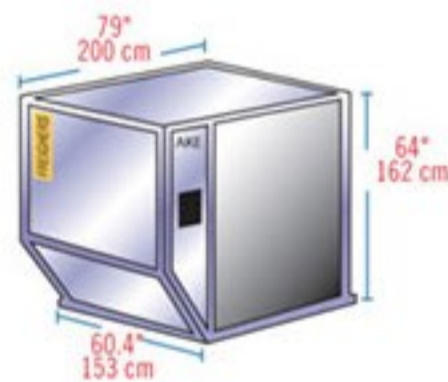
LD-2

IATA ULD Code: DPE Contoured Container
Also known as: APA, DPA
Forkable: DPN
Classification: LD-2
Rate Class: Type 8D
Suitable for: B767
Internal volume: 3.4 cu.m (120 cu. ft)
Maximum gross weight: 1225 kg (2700 lb)



LD-3

IATA ULD Code: AKE Contoured Container
Also known as: AKE, AVA, AVB, AVC, AVK, DVA, DVE, DVP, XKS, XKG
Forkable: AKN, AVN, DKN, DVN, XKN
Classification: LD-3
Rate Class: Type 8
Suitable for: A300, A310, A330, A340, B747, B767, B777, DC-10, MD-11, L1011
Internal volume: 4.3 cu. m (152 cu. ft)
Maximum gross weight: 1588 kg (3500 lb)



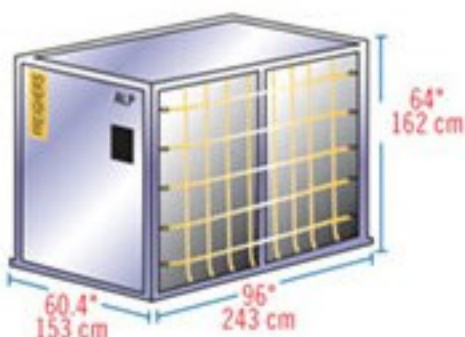
Insulated LD-3

IATA ULD Code: RKN
Classification: LD-3
Rate Class: Type 8
Suitable for: A300, A310, A330, A340, B747, B767, B777, DC-10, MD11, L1011
Internal volume: 3.0 cu.m (109 cu. ft)
Maximum gross weight: 1588 kg (3500 lb)
Temperature Control Range: -20C to +20C



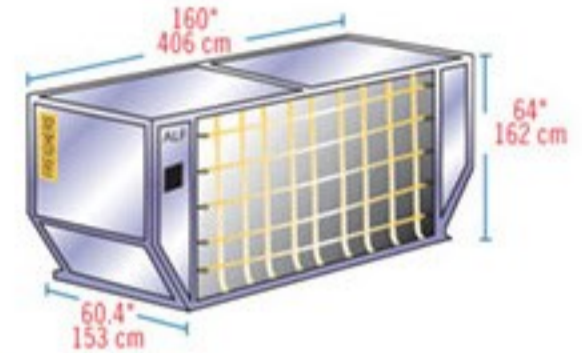
LD-4

IATA ULD Code: ALP Rectangular Container
Also known as: ALD, AWD, AWZ, DLP
Forkable: ALB, ALC, AWB, AWC
Classification: LD-4
Rate Class: Type 8
Suitable for: B767, B777
Internal volume: 5.7cu. m (201 cu. ft)
Maximum gross weight: 2449 kg (5399 lb)



LD-6

IATA ULD Code: ALF Contoured Container
Also known as: AWD, AWF
Forkable: AWC
Classification: LD-6
Rate Class: Type 6W
Suitable for: A300, A310, A330, A340, B747, B777, DC-10, MD-11, L1011
Internal volume: 8.9 cu. m (314 cu. ft)
Maximum gross weight: 3175 kg (7000 lb)



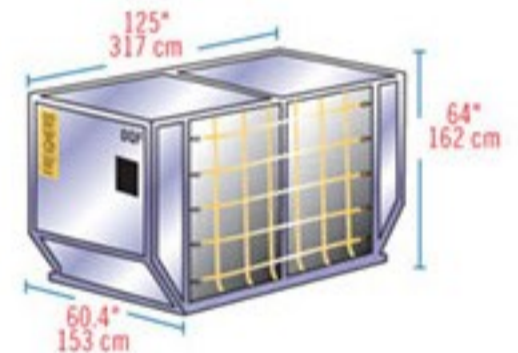
LD-7

IATA ULD Code: XAW P1P Pallet with fixed angle wings and net
Classification: LD-7
Rate Class: Type 5
Suitable for: Wide body: All aircraft
Maximum volume with overhang: 14.0 cu. m (494 cu. ft)
Maximum gross weight: 5000 kg (11023 lb)



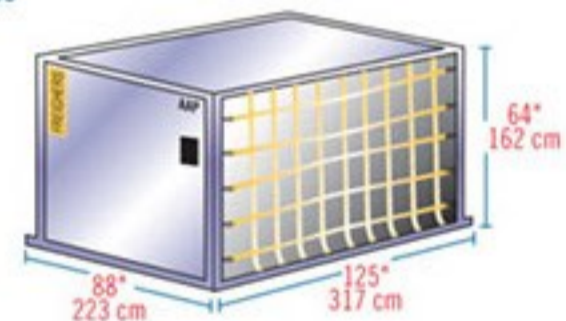
LD-8

IATA ULD Code: DQF
Also known as: ALE, ALN, DLE, DLF, DQP, MQP
Classification: LD-8
Rate Class: Type 6A
Suitable for: B767
Internal volume: 6.85 cu. m (242 cu. ft)
Maximum gross weight: 2450 kg (5401 lb)



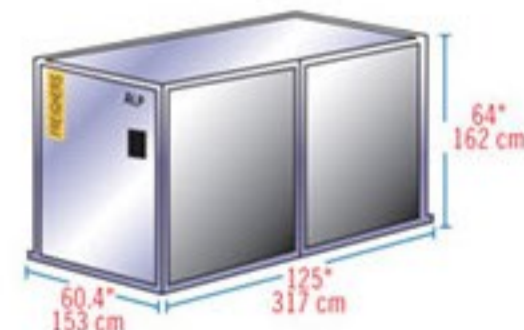
LD-9

IATA ULD Code: AAP Enclosed Pallet on P1P base
Also known as: AA2, XAG, XAV
Classification: LD-9
Rate Class: Type 5
Suitable for: A300, A310, A330, A340, B747, B767, DC-10, MD-11, L1011
Internal volume: 9.1 cu. m (321 cu. ft)
Maximum gross weight:
4624 kg (10194 lb) lower deck
6000 kg (13227 lb) main deck



LD-11

IATA ULD Code: ALP Rectangular Container
Also known as: ALD, AW2, AWB, AWD, AWZ, DLP, DWB, MWB
Refrigerated version: RWB, RWD, RWZ
Classification: LD-11
Rate Class: Type 6
Suitable for: A300, A310, A330, A340, B747, B777, DC-10, MD-11, L1011
Internal volume: 7.2 cu. m (253 cu. ft)
Maximum gross weight: 3176 kg (7002 lb)



A-2

IATA ULD Code: DAA
Classification: A-2
Suitable for: B747, B747F, DC8, DC10, A300/F
Internal volume: 12.6 cu. m (444 cu. ft)
Maximum gross weight: 6033 kg (13300 lb)

